

REFERENCE:

Cost Allocation & Rate Design, Tab 10, Page 12 of 14

PREAMBLE TO IR (IF ANY):

QUESTION:

For the Koch Fertilizer plant in Brandon, Manitoba, please provide the following information:

- a) The diameter size of the transmission main(s) serving the customer.
- b) The length of the transmission main(s) servicing the customer.
- c) The meter size(s) installed for the customer's service.

RESPONSE:

a) and b)

Koch is supplied by a combination of two transmission pressure pipelines. One pipeline is an NPS 12 diameter pipeline, approximately 28 km in length with the second an NPS 6 diameter pipeline that is approximately 21 km in length.

c) The Koch meter station MS-001 has two parallel NPS 8 turbine meters.

REFERENCE:

Cost Allocation & Rate Design, Tab 10, Page 12 of 14

PREAMBLE TO IR (IF ANY):

QUESTION:

For the Koch Fertilizer plant in Brandon, Manitoba, please provide the following information:

- d) Annual sales in therms for 2018 and the test year.
- e) Maximum daily contract quantity.

RESPONSE:

d) The annual sales for the 2018/19 Fiscal year [REDACTED] The 2019/20 test year is forecast to [REDACTED].

1d

e) Excerpt from contract as follows:



AGREEMENT TO
DELIVER

1d

REFERENCE:

Cost Allocation & Rate Design, Tab 10, Page 12 of 14

PREAMBLE TO IR (IF ANY):

QUESTION:

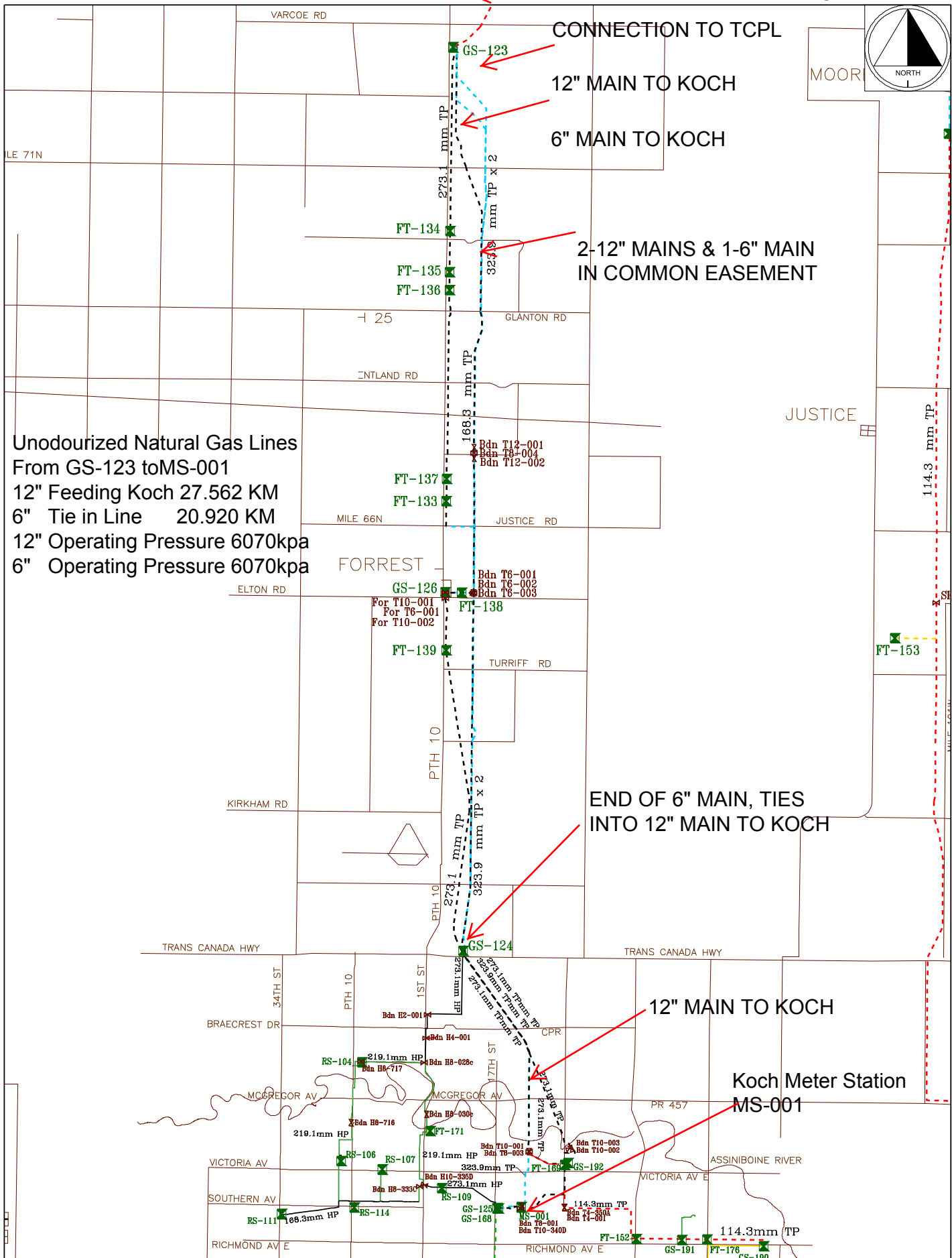
For the Koch Fertilizer plant in Brandon, Manitoba, please provide the following information:

- f) A map showing the transmission line(s) serving the customer, and their operating pressure.

RESPONSE:

- f) Please see attached map. Also see the response to IGU/CENTRA I-18 for a pipeline schematic that may help illustrate the pipelines that supply the Koch Fertilizer plant in Brandon.

The maximum operating pressure of the NPS 12 and NPS 6 pipelines that supply Koch is 880 psi. There is no pressure regulation at the connection to TCPL for these pipelines and the pipelines will operate at the available TCPL pressure. For information, in 2018 the TCPL supply pressure monitored near the TCPL supply point varied between 750 and 800 psi.



Unodourized Natural Gas Lines
 From GS-123 to MS-001
 12" Feeding Koch 27.562 KM
 6" Tie in Line 20.920 KM
 12" Operating Pressure 6070kpa
 6" Operating Pressure 6070kpa

END OF 6" MAIN, TIES INTO 12" MAIN TO KOCH

Koch Meter Station
 MS-001