

SUPPLEMENTAL BOOK OF DOCUMENTS

**MANITOBA PUBLIC INSURANCE
2017/2018 GENERAL RATE APPLICATION**

BIKE WINNIPEG

Christian Monnin

HILL SOKALSKI WALSH OLSON LLP
Litigation counsel
2670 – 360 Main Street
Winnipeg, MB R3C 3Z3

October 19, 2017

INDEX

Tab

7. Casualty Rates: Canadian Motor Vehicle Traffic Collision Statistics (www.tc.gc.ca): 2004, 2005, 2006, 2007, 2008, 2009, 2010, 2011, 2012, 2013, 2014 and 2015

TAB 7

Casualty Rates

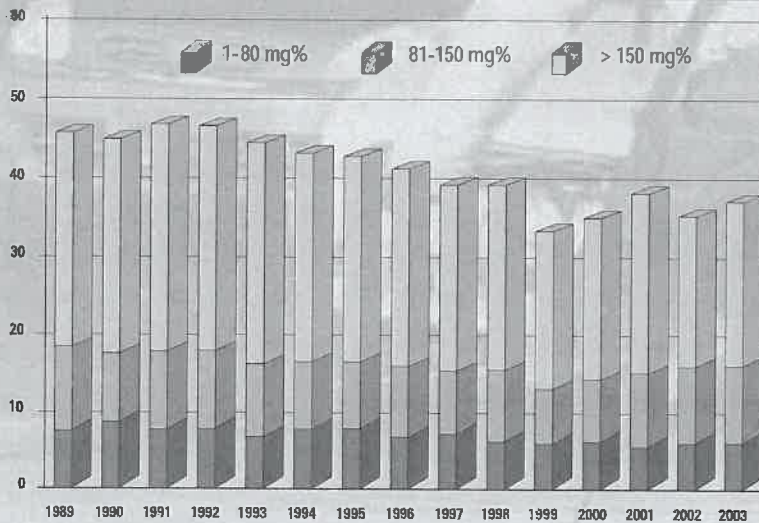
	PER 100,000 POPULATION		PER BILLION VEHICLE-KILOMETRES*		PER 100,000 LICENSED DRIVERS	
	Fatalities	Injuries	Fatalities	Injuries	Fatalities	Injuries
Canada	8.5	664.7	8.8	680.8	12.6	979.8
N.L.	7.2	516.6	9.7	699.1	10.8	779.2
P.E.I.	20.3	681.1	22.6	759.5	28.8	964.6
N.S.	9.6	546.2	9.4	533.2	13.7	776.5
N.B.	9.4	562.4	9.6	572.9	13.4	800.0
Que.	8.6	740.9	9.0	778.0	13.7	1,182.9
Ont.	6.5	588.7	6.6	599.8	9.3	842.9
Man.	8.5	796.3	9.5	890.8	14.3	1,343.0
Sask.	12.7	745.2	11.0	647.1	18.8	1,107.4
Alta.	12.1	757.3	9.9	621.5	16.2	1,015.1
B.C.	10.2	694.3	12.4	842.4	15.0	1,019.2
Y.T.	16.0	679.3	9.4	397.4	21.4	907.0
N.W.T.	7.0	352.7	9.6	485.2	9.7	487.8
Nvt.	3.4	222.6	33.7	2,222.2	n.a.	n.a.

* Statistics Canada, "Canadian Vehicle Survey", Catalogue No. 53-223-XIE.

Note: Data for Ontario are preliminary for 2004. There is no official abbreviation for Nunavut at this time. The abbreviation used here is provisional.

n.a.: Licensed driver data is not available for Nunavut.

Percentage of Fatally Injured Drivers Tested and Found to Have Been Drinking (BAC > 0 mg%*)



*BAC: Blood Alcohol Concentration.

mg%: Weight of alcohol in the bloodstream stated as milligrams in 100 millilitres of blood.

Note: BAC categories are reported as 81-160 mg% and > 160 mg% for 2001 to 2003. 2004 data were not available at the time of publication.

Source: Traffic Injury Research Foundation.

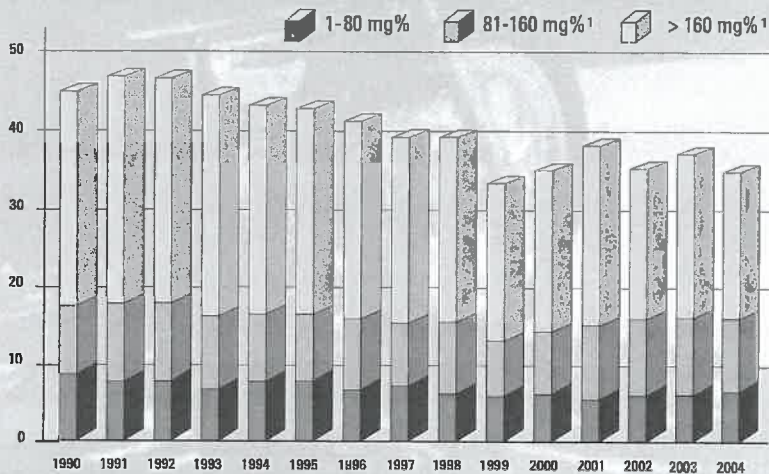
2004

Casualty Rates

	PER 100,000 POPULATION		PER BILLION VEHICLE-KILOMETRES*		PER 100,000 LICENSED DRIVERS	
	Fatalities	Injuries	Fatalities	Injuries	Fatalities	Injuries
Canada	9.1	652.7	9.3	668.0	13.3	960.2
N.L.	8.3	456.0	9.8	537.1	12.7	693.6
P.E.I.	10.9	543.8	11.3	565.7	15.8	789.5
N.S.	7.7	523.8	7.1	487.7	11.0	750.8
N.B.	14.1	528.6	13.6	508.5	20.0	751.0
Que.	9.3	762.3	10.6	871.2	14.7	1,212.4
Ont.	6.3	570.1	6.3	571.5	9.0	816.0
Man.	9.6	737.0	10.3	788.4	16.2	1,246.6
Sask.	14.8	687.6	13.2	612.8	21.8	1,012.9
Alta.	14.3	752.4	10.6	555.1	19.1	1,003.4
B.C.	10.8	675.6	13.9	873.3	15.8	987.7
Y.T.	19.4	626.0	12.3	396.4	25.5	823.8
N.W.T.	4.7	432.7	5.4	505.7	6.3	584.1
Nvt.	6.7	240.1	n.a.	n.a.	n.a.	n.a.

* Statistics Canada, "Canadian Vehicle Survey", Catalogue No. 53-223-XIE.
 Note: Data for Ontario and Saskatchewan are preliminary for 2005. There is no official abbreviation for Nunavut at this time. The abbreviation used here is provisional.
 n.a.: Data is not available.

Percentage of Fatally Injured Drivers Tested and Found to Have Been Drinking (BAC* >0 mg%)



*BAC: Blood Alcohol Concentration.
 mg%: Weight of alcohol in the bloodstream stated as milligrams in 100 millilitres of blood.
¹ Prior to 2001 BAC categories were reported as 81-150 mg% and >150 mg%.
 Note: 2005 data were not available at the time of publication.
 Source: Traffic Injury Research Foundation.

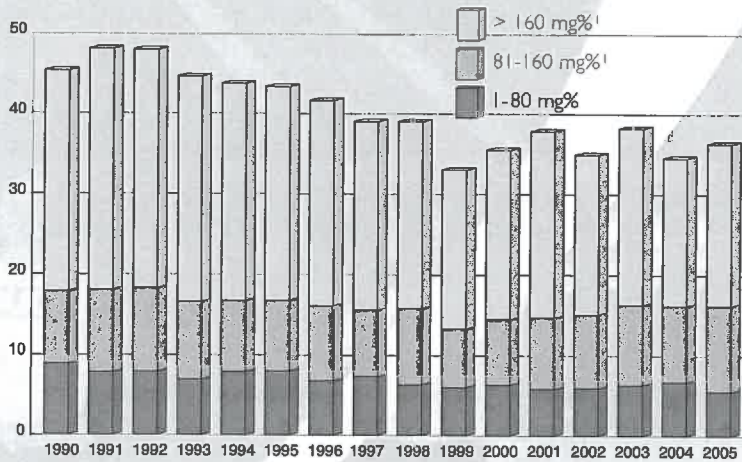
2005

Casualty Rates

	PER 100,000 POPULATION		PER BILLION VEHICLE-KILOMETRES ¹		PER 100,000 LICENSED DRIVERS	
	Fatalities	Injuries	Fatalities	Injuries	Fatalities	Injuries
Canada	8.9	604.0	8.9	604.2	13.0	884.5
N.L.	7.3	428.7	8.5	501.3	10.8	638.9
P.E.I.	18.8	604.2	25.0	803.6	26.8	863.9
N.S.	9.2	513.4	8.4	470.8	13.0	726.8
N.B.	14.1	519.1	12.3	452.3	19.9	729.5
Que.	9.4	649.9	10.3	711.1	14.8	1,027.1
Ont.	6.2	539.8	6.0	525.2	8.8	772.3
Man.	10.1	741.2	9.9	729.1	16.4	1,202.9
Sask.	13.9	686.6	12.2	604.4	20.2	999.8
Alta.	13.4	769.1	10.0	570.7	17.9	1,027.8
B.C.	9.6	586.0	12.9	789.5	14.0	855.3
Y.T.	41.6	746.1	24.2	434.5	55.3	991.1
N.W.T.	4.8	267.6	5.3	294.3	6.3	355.4
Nvt.	0.0	214.4	n.a.	n.a.	n.a.	n.a.

² Statistics Canada, "Canadian Vehicle Survey", Catalogue No. 53-223-XIE
 Note: Data for Ontario and Saskatchewan are preliminary for 2006.
 n.a.: Data are not available.

Percentage of Fatally Injured Drivers Tested and Found to Have Been Drinking (BAC* > 0 mg%)



*BAC: Blood Alcohol Concentration.

mg%: Weight of alcohol in the bloodstream stated as milligrams in 100 millilitres of blood.

¹ Prior to 2001 BAC categories were reported as 81-150 mg% and >150 mg%.

Note: 2006 data were not available at the time of publication.

Source: Traffic Injury Research Foundation.

2006

CASUALTY RATES 2007

	PER 100,000 POPULATION ¹		PER BILLION VEHICLE-KILOMETRES ²		PER 100,000 LICENSED DRIVERS	
	FATALITIES	INJURIES	FATALITIES	INJURIES	FATALITIES	INJURIES
CANADA	8.4	589.7	8.3	584.4	12.2	859.0
N.L.	8.1	447.0	9.4	519.0	12.0	661.3
P.E.I.	5.8	587.2	5.6	565.6	8.3	837.5
N.S.	10.6	655.2	9.3	577.9	14.9	924.6
N.B.	11.9	500.2	11.0	459.5	16.6	693.9
QUE.	8.1	624.2	8.8	678.6	12.6	977.3
ONT.	6.0	523.7	6.2	534.8	8.6	749.0
MAN.	9.1	715.6	7.9	617.1	14.2	1,113.0
SASK.	14.3	684.7	10.6	509.0	20.8	993.7
ALTA.	13.0	698.7	9.6	513.2	17.6	942.9
B.C.	9.7	602.5	11.6	725.5	13.9	864.2
Y.T.	15.3	638.4	10.3	427.0	20.7	862.0
N.W.T.	11.5	358.3	13.9	435.0	20.5	638.2
NUN.	0.0	46.0	0.0	461.5	0.0	n.a.

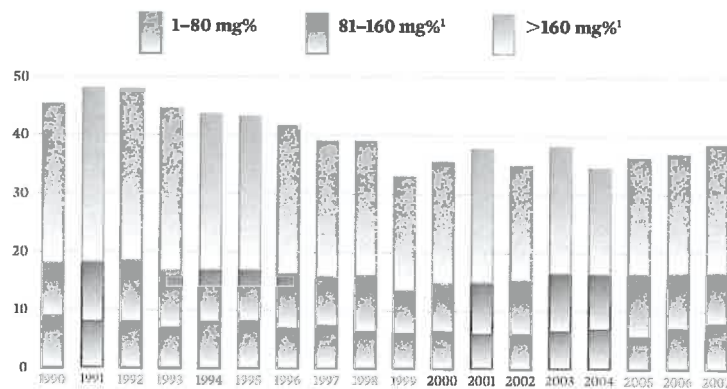
1. Statistics Canada, Annual Demographic Estimates: Canada, Provinces and Territories, 2008, Catalogue No. 91-215-X.

2. Statistics Canada, Canadian Vehicle Survey, Catalogue No. 53-223-XIE.

Note: Data for Ontario are preliminary for 2007.

n.a.: Data are not available.

PERCENTAGE OF FATALLY INJURED DRIVERS TESTED AND FOUND TO HAVE BEEN DRINKING 1990-2007 (BAC >0 mg%)*



*BAC: Blood Alcohol Concentration.

mg%: Weight of alcohol in the bloodstream stated as milligrams in 100 millilitres of blood.

1. Before 2001, BAC categories were reported as 81-150 mg% and >150 mg%.

Note: 2007 data are preliminary.

Source: Traffic Injury Research Foundation.

Casualty Rates 2008

	PER 100,000 POPULATION ¹		PER BILLION VEHICLE-KILOMETRES ²		PER 100,000 LICENSED DRIVERS	
	FATALITIES	INJURIES	FATALITIES	INJURIES	FATALITIES	INJURIES
CANADA	7.3	536.6	7.4	549.2	10.5	778.6
N.L.	8.3	402.2	8.0	385.9	11.8	571.1
P.E.I.	13.6	452.5	14.9	496.5	19.7	654.3
N.S.	8.8	754.1	8.6	743.6	11.7	1,011.6
N.B.	9.5	478.6	9.6	482.2	13.1	661.0
QUE.	7.2	561.9	8.1	632.1	11.2	875.9
ONT.	4.8	484.5	5.0	479.9	6.8	661.7
MAN.	7.6	651.8	8.1	689.1	12.0	1,027.6
SASK.	15.4	683.9	12.2	541.0	21.9	973.0
ALTA.	11.4	612.2	8.6	464.2	15.3	824.1
B.C.	8.1	502.5	9.9	613.1	11.6	719.1
Y.T.	24.1	723.5	15.4	461.4	32.4	970.7
N.W.T.	11.4	395.7	11.8	408.8	20.6	711.3
NUN.	12.6	129.7	132.5	1,357.6	n.a.	n.a.

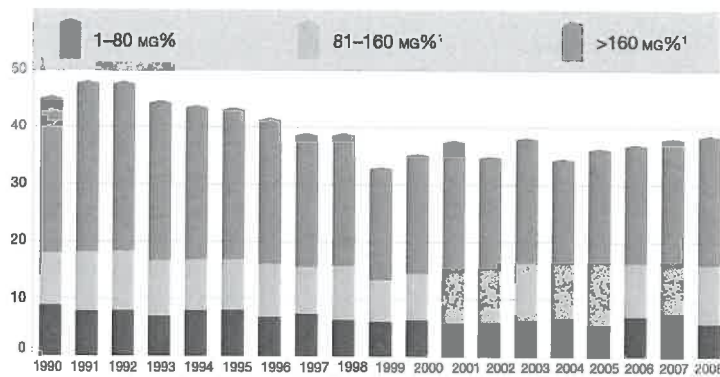
1. Statistics Canada, Annual Demographic Estimates: Canada, Provinces and Territories, 2009, Catalogue No. 91-215-X.

2. Statistics Canada, Canadian Vehicle Survey, Catalogue No. 53-223-XIE.

Note: Data for Ontario are preliminary for 2008.

n.a.: Data are not available.

Percentage of drivers tested who died and tests confirmed they had been drinking 1990–2008 (BAC >0 mg%)*



* BAC: Blood Alcohol Concentration.

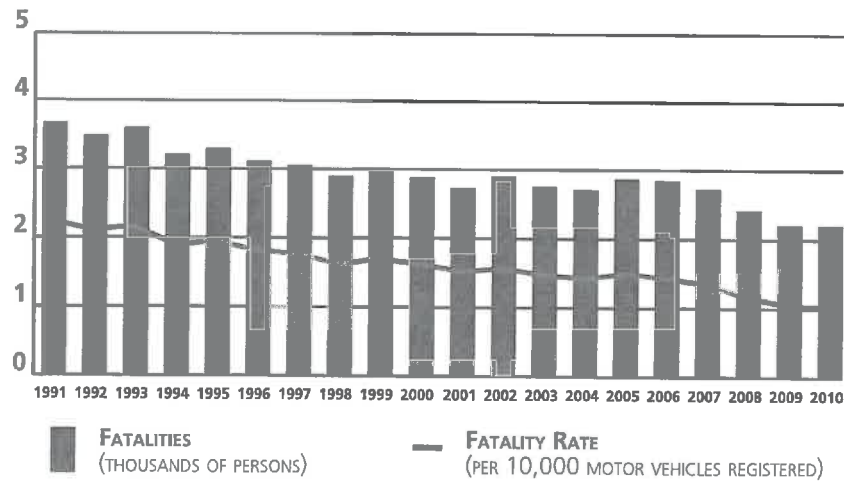
mg%: Weight of alcohol in the bloodstream stated as milligrams in 100 millilitres of blood.

¹ Before 2001, BAC categories were reported as 81-150 mg% and >150 mg%.

Note: 2008 data are preliminary.

Source: Traffic Injury Research Foundation.

FATALITIES 1991-2010



CASUALTY RATES 2010

	PER 100,000 POPULATION ¹		PER BILLION VEHICLE-KILOMETRES ²		PER 100,000 LICENSED DRIVERS	
	FATALITIES	INJURIES	FATALITIES	INJURIES	FATALITIES	INJURIES
CANADA	6.5	500.0	6.6	504.1	9.5	724.8
N.L.	5.5	404.1	5.8	426.2	7.7	567.1
P.E.I.	6.3	451.9	6.9	493.7	9.1	655.0
N.S.	7.4	513.0	6.9	476.9	10.2	707.5
N.B.	12.4	458.7	11.5	425.9	16.9	626.5
QUE.	6.1	548.6	6.6	594.2	9.4	849.5
ONT.	4.3	477.3	4.5	498.3	6.2	682.9
MAN.	7.0	570.5	7.2	583.9	11.0	891.1
SASK.	16.0	625.9	12.8	499.5	23.1	905.3
ALTA.	9.2	490.5	6.6	349.5	12.4	655.8
B.C.	8.0	461.5	10.1	579.3	11.6	665.7
Y.T.	11.6	636.6	7.9	433.9	15.4	848.5
N.W.T.	6.8	257.8	9.4	353.6	12.1	455.9
NVT.	6.1	124.9	60.2	1,234.6	48.3	989.4

1. Statistics Canada, Annual Demographic Estimates: Canada, Provinces and Territories, 2011, Catalogue No. 91-215-X.

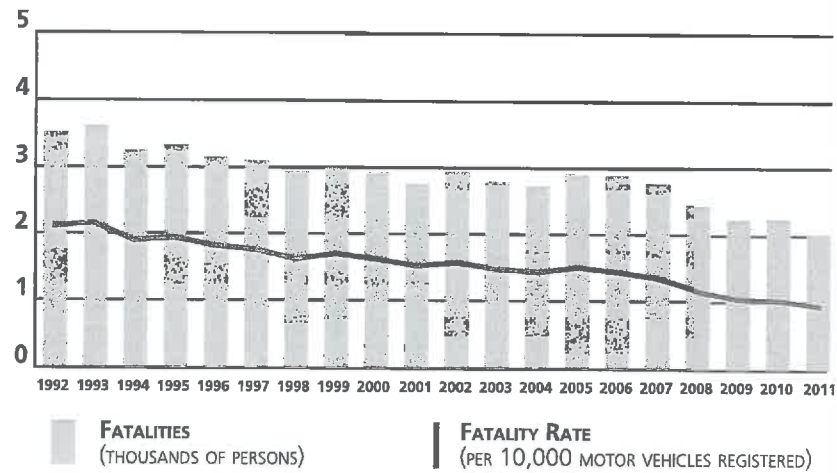
2. Statistics Canada, Canadian Vehicle Survey, Catalogue No. 53-223-XIE.

Notes: Vehicle Kilometres data for 2010 were estimated using average annual growth rates for the previous five years.

Data for Ontario are preliminary.



FATALITIES 1992-2011



CASUALTY RATES 2011

	PER 100,000 POPULATION ¹		PER BILLION VEHICLE-KILOMETRES ²		PER 100,000 LICENSED DRIVERS	
	FATALITIES	INJURIES	FATALITIES	INJURIES	FATALITIES	INJURIES
CANADA	5.8	483.5	5.8	485.0	8.4	699.6
N.L.	5.5	402.8	5.5	407.5	7.7	567.1
P.E.I.	12.4	465.4	13.4	503.6	17.9	675.7
N.S.	6.7	520.2	6.2	480.1	9.3	716.5
N.B.	8.3	376.3	7.6	344.3	11.4	512.8
QUE.	6.1	519.4	6.6	565.6	9.4	803.6
ONT.	3.5	458.1	3.7	479.8	5.0	653.6
MAN.	8.8	657.3	8.9	662.6	13.5	1,011.1
SASK.	14.2	650.1	11.2	512.6	20.4	934.8
ALTA.	8.3	491.9	5.7	338.7	11.1	657.7
B.C.	6.4	426.3	8.0	536.1	9.2	615.0
Y.T.	25.4	545.2	17.9	383.0	41.8	896.7
N.W.T.	0.0	244.3	0.0	332.5	0.0	437.4
NVT.	8.9	128.2	83.5	1,197.0	49.9	715.1

1. Statistics Canada, *Annual Demographic Estimates: Canada, Provinces and Territories, 2012*, Catalogue No. 91-215-X.
2. Statistics Canada, *'Canadian Vehicle Survey'*, Catalogue No. 53-223-XIE.

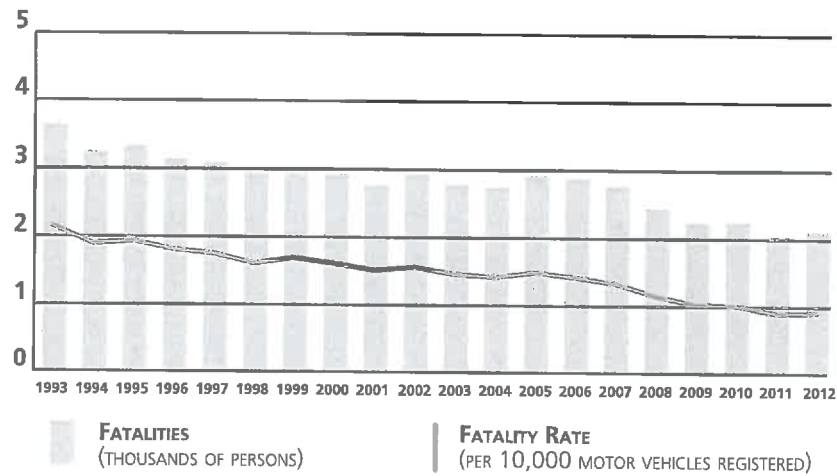
Notes: Vehicle KMs Data were not available for 2011 (or 2010) so they were estimated using average yearly change for the years 2005-2009.

Data for Ontario are preliminary for 2011.

Recent changes in how traffic accident reports are collected in Manitoba resulted in an increased number of injuries of a minimal nature being captured in 2011.



FATALITIES 1993-2012



CASUALTY RATES 2012

	PER 100,000 POPULATION ¹		PER BILLION VEHICLE-KILOMETRES ²		PER 100,000 LICENSED DRIVERS	
	FATALITIES	INJURIES	FATALITIES	INJURIES	FATALITIES	INJURIES
CANADA	6.0	475.3	6.0	480.5	8.6	684.0
N.L.	5.3	392.1	5.9	433.7	7.7	567.1
P.E.I.	7.6	438.8	7.6	439.8	10.7	619.0
N.S.	8.8	492.8	7.7	434.1	12.0	672.3
N.B.	8.6	375.4	8.0	351.8	11.7	512.8
QUE.	5.2	483.3	5.9	545.2	8.1	752.1
ONT.	4.2	442.3	4.3	459.9	5.9	625.7
MAN.	7.7	842.1	7.3	805.5	11.4	1,255.5
SASK.	16.8	664.9	13.9	548.2	24.0	948.9
ALTA.	8.9	468.5	6.4	340.1	11.9	630.9
B.C.	6.2	444.5	7.6	543.3	8.8	629.1
Y.T.	5.5	549.0	3.2	318.3	7.2	719.5
N.W.T.	4.6	334.7	5.2	378.9	8.1	590.0
NVT.	2.9	167.1	26.5	1,538.1	16.6	964.6

1. Statistics Canada, *Annual Demographic Estimates: Canada, Provinces and Territories, 2013*, Catalogue No. 91-215-X.
2. Statistics Canada, *'Canadian Vehicle Survey'*, Catalogue No. 53-223-XIE.

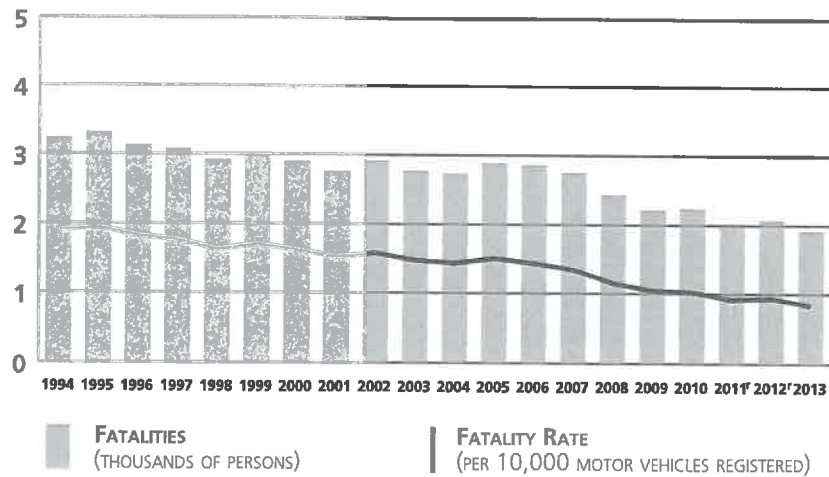
Notes: Vehicle KMs Data were not available for 2012 so they were estimated using average yearly change for the years 2009-2011.

Data for Ontario are preliminary for 2012. Data for Newfoundland and New Brunswick were estimated.

Recent changes in how traffic accident reports are collected in Manitoba resulted in an increased number of injuries of a minimal nature being captured in 2012.



FATALITIES 1994-2013



CASUALTY RATES 2013

	PER 100,000 POPULATION ¹		PER BILLION VEHICLE-KILOMETRES ²		PER 100,000 LICENSED DRIVERS	
	FATALITIES	INJURIES	FATALITIES	INJURIES	FATALITIES	INJURIES
CANADA	5.5	470.2	5.6	481.9	7.7	671.2
NL	5.3	391.1	5.8	426.2	7.7	567.1
PE	9.6	816.5	9.7	826.1	13.3	1,129.9
NS	8.5	447.3	7.6	401.4	11.5	605.9
NB	6.6	376.1	6.3	355.7	9.0	512.8
QC	4.9	462.3	5.6	530.4	7.4	697.7
ON	3.5	440.4	3.7	465.6	5.0	622.1
MB	6.7	881.1	6.4	840.0	9.9	1,302.8
SK	12.6	635.6	10.6	535.7	17.9	903.5
AB	8.9	465.4	6.4	335.5	12.1	628.3
BC	5.9	445.6	7.5	567.2	8.3	627.5
YT	11.0	563.7	6.4	329.6	14.4	736.3
NT	6.8	271.4	7.9	314.0	12.4	492.0
NU	8.5	112.9	85.7	1,142.9	57.3	763.7

1. Statistics Canada, *Annual Demographic Estimates: Canada, Provinces and Territories, 2014*, Catalogue No. 91-215-X.
2. Statistics Canada, *'Canadian Vehicle Survey'*, Catalogue No. 53-223-XIE.

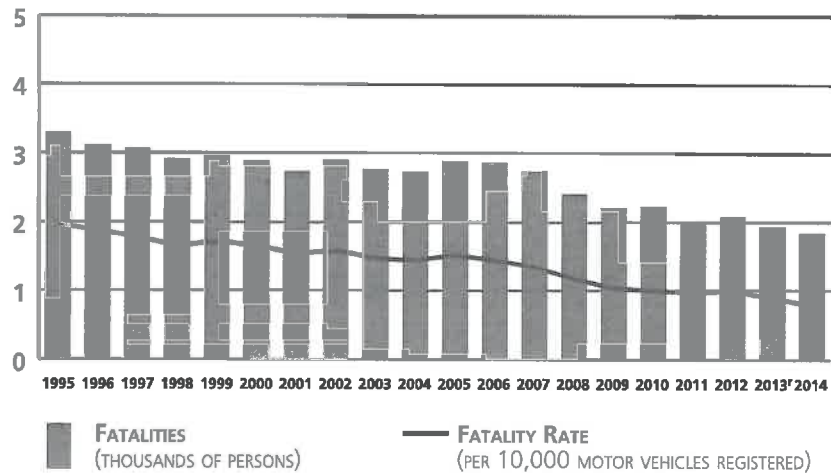
Notes: Vehicle kilometres travelled data were not available for 2013 so they were estimated using average yearly change for the years 2010-2012

Data for Ontario are preliminary for 2013. Data for Newfoundland and New Brunswick were estimated.

Recent changes in how traffic accident reports are collected in Manitoba resulted in an increased number of injuries of a minimal nature being captured in 2013.



FATALITIES 1995-2014



CASUALTY RATES 2014

	PER 100,000 POPULATION ¹		PER BILLION VEHICLE-KILOMETRES ²		PER 100,000 LICENSED DRIVERS	
	FATALITIES	INJURIES	FATALITIES	INJURIES	FATALITIES	INJURIES
CANADA	5.2	421.7	5.1	418.1	7.4	601.7
NL	5.5	390.5	5.8	413.7	8.0	567.1
PE	3.4	352.3	3.5	358.9	4.7	489.2
NS	5.8	412.4	5.0	356.2	7.9	555.0
NB	7.7	353.8	7.1	326.5	10.5	481.8
QC	4.1	436.0	4.6	493.3	6.2	657.4
ON	3.5	347.4	3.6	352.1	5.0	489.7
MB	5.3	895.2	4.9	820.3	7.8	1,318.5
SK	11.6	516.4	9.5	423.0	16.5	733.8
AB	9.0	454.9	6.3	317.8	12.1	613.1
BC	6.3	455.5	7.7	560.0	8.9	644.7
YT	10.8	483.8	6.3	280.6	14.2	633.9
NT	9.1	202.4	10.3	228.8	16.0	356.8
NU	11.1	130.3	108.1	1,270.3	54.6	641.0

1. Statistics Canada, *Annual Demographic Estimates: Canada, Provinces and Territories, 2015*, Catalogue No. 91-215-X.
2. Statistics Canada, *'Canadian Vehicle Survey'*, Catalogue No. 53-223-XIE.

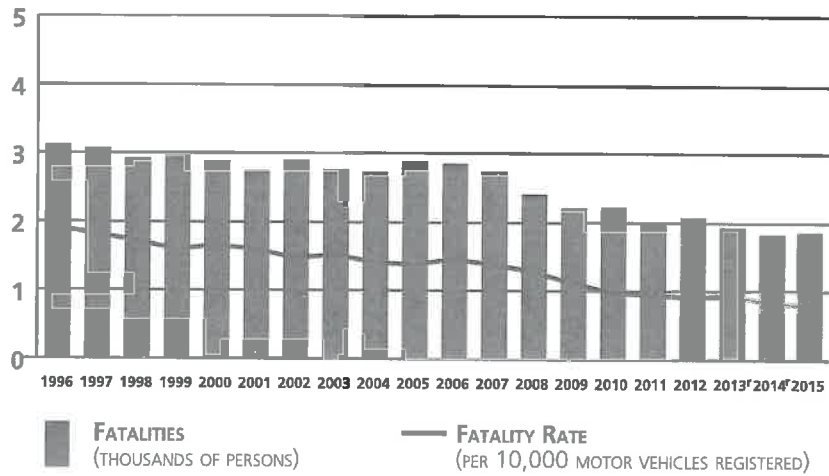
Notes: Vehicle kilometres travelled data were not available for 2014 so they were estimated using average yearly change for the years 2011-2013

Data for Ontario are preliminary for 2014. Data for Newfoundland and New Brunswick were estimated.

Recent changes in how traffic accident reports are collected in Manitoba resulted in an increased number of injuries of a minimal nature being captured in 2014.



FATALITIES 1996-2015



CASUALTY RATES 2015

	PER 100,000 POPULATION ¹		PER BILLION VEHICLE-KILOMETRES ²		PER 100,000 LICENSED DRIVERS	
	FATALITIES	INJURIES	FATALITIES	INJURIES	FATALITIES	INJURIES
CANADA	5.2	451.6	5.1	442.5	7.4	640.6
NL	7.9	624.4	8.2	647.8	11.5	906.2
PE	12.3	353.7	12.3	354.5	17.0	488.9
NS	5.6	511.5	4.8	433.4	7.5	686.2
NB	6.6	355.8	6.0	321.6	9.0	484.3
QC	4.4	447.9	4.9	499.3	6.6	673.1
ON	3.6	401.1	3.7	401.9	5.1	562.5
MB	6.0	921.2	5.5	837.4	8.9	1,354.6
SK	10.7	489.4	8.7	396.3	15.4	707.0
AB	7.9	429.4	5.5	298.2	10.5	574.0
BC	6.3	478.9	7.7	583.7	8.8	669.5
YT	10.7	556.3	6.1	319.5	14.2	736.6
NT	6.8	183.1	7.6	204.0	11.5	310.4
NU	2.7	134.1	26.3	1,289.5	13.6	668.3

1. Statistics Canada, Annual Demographic Estimates: Canada, Provinces and Territories, 2016, Catalogue No. 91-215-X.
2. Statistics Canada, 'Canadian Vehicle Survey', Catalogue No. 53-223-XIE.

Notes: Vehicle kilometres travelled data were not available for 2015 so they were estimated using average yearly change for the years 2012-2014.
 Data for Ontario are preliminary for 2015. Data for New Brunswick were estimated.
 Recent changes in how traffic accident reports are collected in Manitoba resulted in an increased number of injuries of a minimal nature being captured in 2015.

